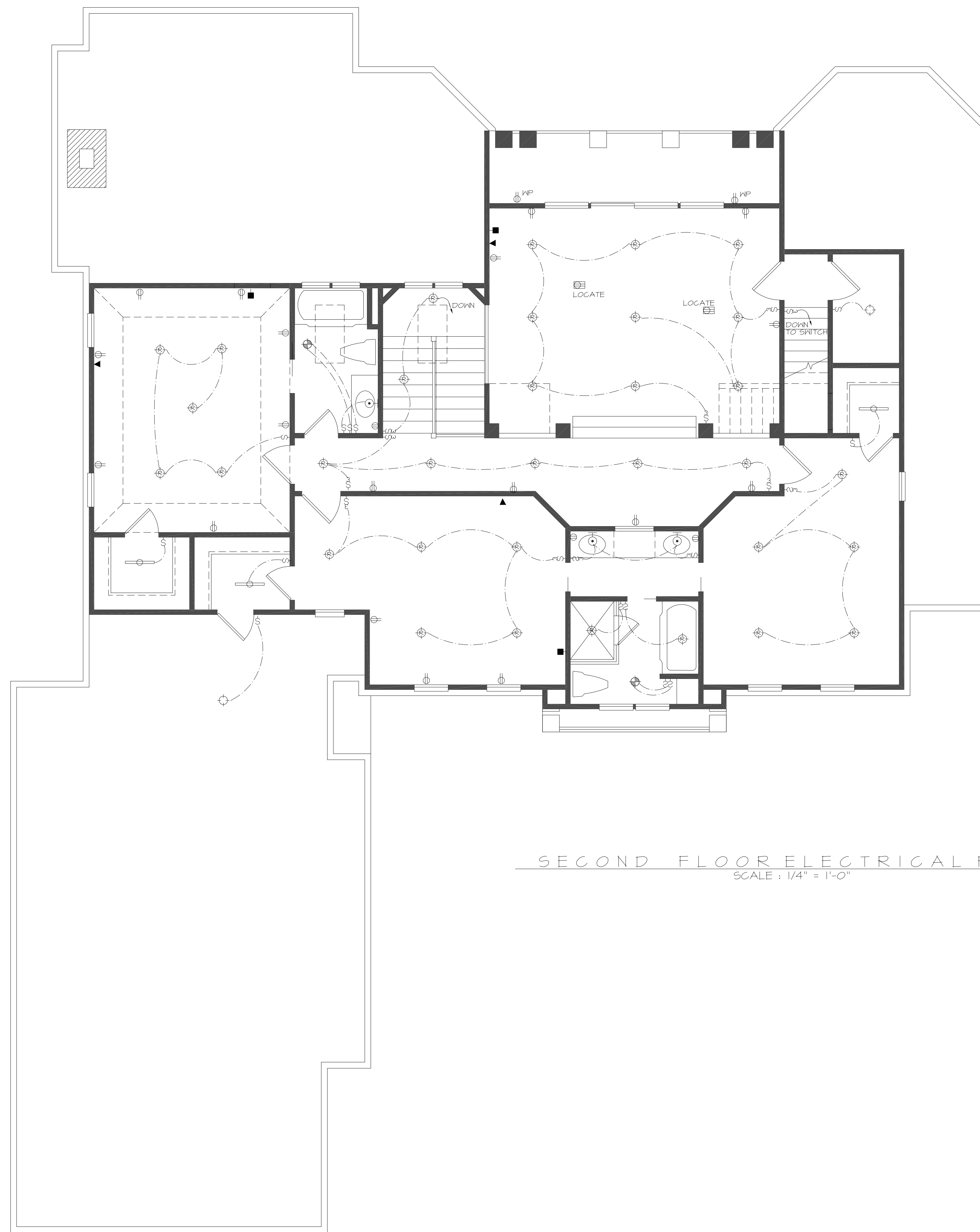


ELECTRICAL LEGEND

OUTLET IN BASEBOARD	○
OUTLET 12" A.F.F.	○
OUTLET 42" A.F.F.	○
1/2 HOT OUTLET	○
DRYER OUTLET	○
OUTLET IN FLOOR	○
OUTLET IN CEILING	○
WATERPROOFED OUTLET	○
TELEVISION	■
TELEPHONE	■
SMOKE DETECTOR	⊙
CARBON MONOXIDE	⊙
DECORATIVE WALL LIGHT	○
DECORATIVE CEILING LIGHT	○
RECESSED LIGHT (5TD)	○
RECESSED LIGHT (4")	○
RECESSED LIGHT (2")	○
EYEBALL LIGHT	○
LOW VOLTAGE STRIP LIGHT	—
EXHAUST FAN	○
EXHAUST FAN W/ LIGHT	○
FLUORESCENT LIGHT	—
UNDER CABINET LIGHT	—
SINGLE SWITCH	S
3-WAY SWITCH	3
4-WAY SWITCH	4
CEILING FAN	○
CEILING FAN W/ LIGHT	○
FLOOD LIGHTS	○
THERMOSTAT	⊙
GARAGE DOOR BUTTON	⊙
DOOR BELL BUTTON	⊙
DOOR BELL CHIME	⊙

NOTE:
ALL ELECTRICAL TO COMPLY WITH
THE NATIONAL ELECTRIC CODE AND
LOCAL BUILDING STANDARDS.



SECOND FLOOR ELECTRICAL PLAN
SCALE: 1/4" = 1'-0"

7400 Carmel Executive Park
Suite 150-B
Charlotte, North Carolina 28226
1-800-617-6105
www.livingconcepts.com



CONTRACT NO.	JOB NO.
DRAWN BY:	CHECKED BY:
REVISIONS:	
DATE:	