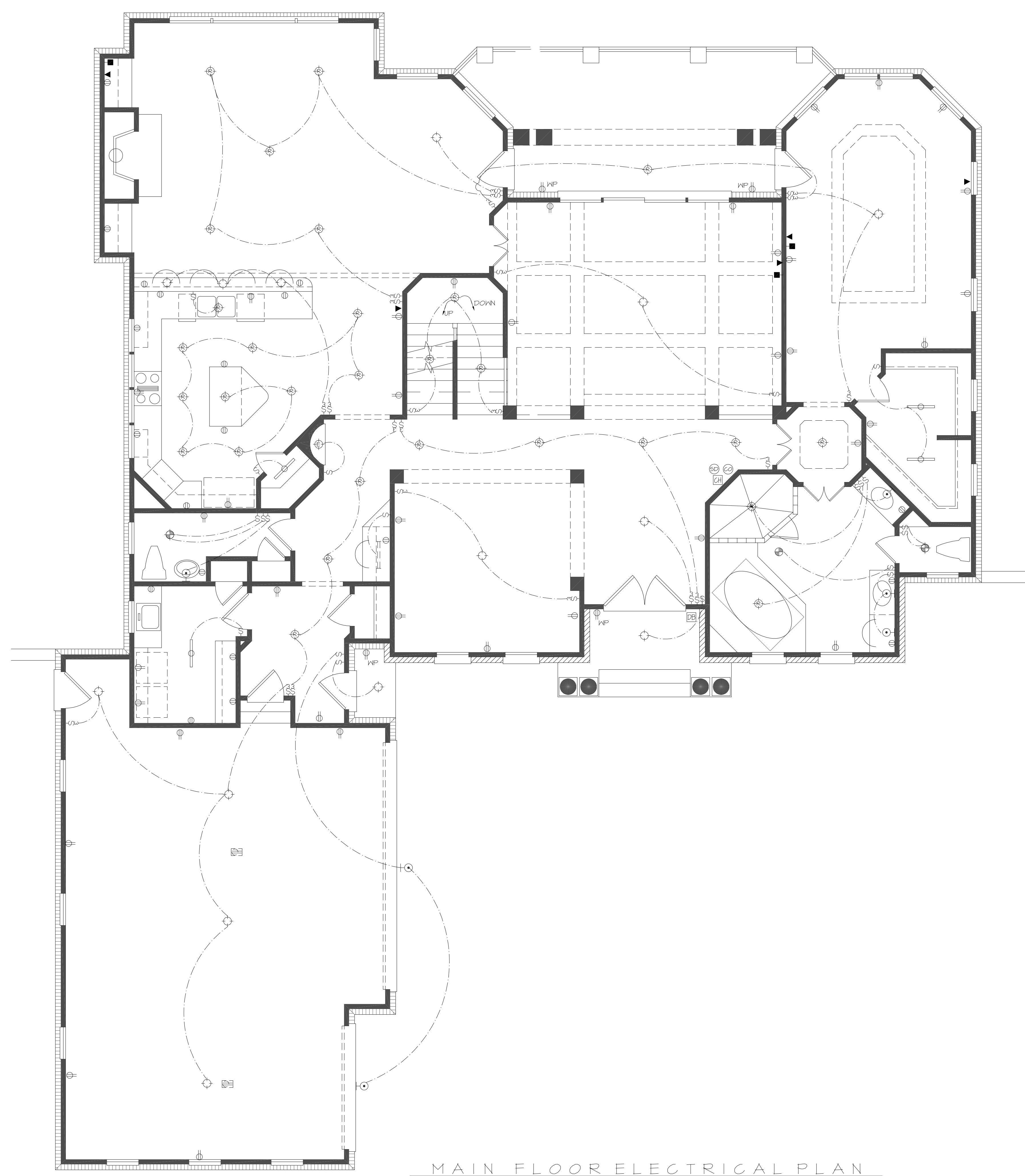


ELECTRICAL LEGEND	
OUTLET IN BASEBOARD	○
OUTLET 12" A.F.F.	○
OUTLET 42" A.F.F.	○
1/2 HOT OUTLET	○
DRYER OUTLET	○
OUTLET IN FLOOR	○
OUTLET IN CEILING	○
WATERPROOFED OUTLET	○
TELEVISION	■
TELEPHONE	■
SMOKE DETECTOR	⊙
CARBON MONOXIDE	⊙
DECORATIVE WALL LIGHT	⊙
DECORATIVE CEILING LIGHT	⊙
RECESSED LIGHT (STD)	⊙
RECESSED LIGHT (4")	⊙
RECESSED LIGHT (2")	⊙
EYEBALL LIGHT	⊙
LOW VOLTAGE STRIP LIGHT	⊙
EXHAUST FAN	⊙
EXHAUST FAN W/ LIGHT	⊙
FLUORESCENT LIGHT	⊙
UNDER CABINET LIGHT	⊙
SINGLE SWITCH	⊙
3-WAY SWITCH	⊙
4-WAY SWITCH	⊙
CEILING FAN	⊙
CEILING FAN W/ LIGHT	⊙
FLOOD LIGHTS	⊙
THERMOSTAT	⊙
GARAGE DOOR BUTTON	⊙
DOOR BELL BUTTON	⊙
DOOR BELL CHIME	⊙

NOTE:
ALL ELECTRICAL TO COMPLY WITH
THE NATIONAL ELECTRIC CODE AND
LOCAL BUILDING STANDARDS.



MAIN FLOOR ELECTRICAL PLAN
SCALE: 1/4" = 1'-0"

7400 Carmel Executive Park
Suite 150-B
Charlotte, North Carolina 28226
1-800-617-6105
www.livingconcepts.com



CONV. NO.	JOB NO.
D.D.	DRAWN BY:
	CHECKED BY:
REVISIONS:	
DATE :	